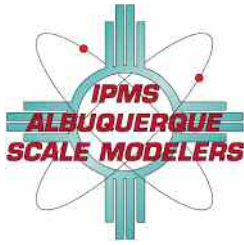


ALBUQUERQUE SCALE MODELERS



<http://abqscalemodelers.com>

September 2016

ASM AT NATIONALS STEVE STRONACH

Steve Stronach, Dave Straub, and Jack Morris attended the 2016 Nationals in Columbia, South Carolina, representing ASM. We met Art Evans, Richard Engar, Don Sillence, and Jim Guld around the contest and vendor rooms.

Jim took three second place awards in military vehicles.

At the banquet it was announced that the future nationals will be held in Omaha, Nebraska (2017), Phoenix, Arizona (2018), and Chattanooga, Tennessee (2019).

tatives—not sure why not—but, anyway...) that Tuscon's Sonoran Desert Modelers were awarded Chapter of the Year at the recent IPMS Nationals. As a result I would like start this month by offering them our congratulations. I am sure that we all are happy to see another Region 10 chapter win this significant and prestigious award. It's not an easy one to win but I have read their newsletter with interest over the last year or so and they seem to be a chapter that are doing a lot of good things. So congratulations to them on a well-deserved award!



Talking of newsletters, along with at least some of you, I have been reading a lot of newsletters from other chapters recently and I have to say that there is a lot of great work going on out there. There's a lot of variety too. Some newsletters are fairly similar in content and direction to our own, while others are quite different. It led me to think, what really belongs in a club newsletter. Just news, reviews and trip reports? Or should it be more diverse? I suppose the bottom line is, whatever the editor or club leadership decides belongs in there and also whatever the membership approve of and contribute. Most of the content of our own newsletter tends towards the modeling and historical and hopefully you are all happy with that—if not please let the E-Board know. Other clubs have scantily clad young ladies and recipes. Do they belong? I have to say that personally, I am a big fan of both, but not really within a modeling publication. Unless it's the other kind of modeling that we're talking about... That's probably an individual decision anyway and who am I to say if others are right or wrong? We

THE FEZ SEZ TONY HUMPHRIES

We have heard through the grapevine (although not through any formal communication from IPMS or any of its represen-



August Meeting highlights, top to bottom: the Swap Meet in progress, and the business meeting again in the auditorium.



FRED'S FOTO FILE

FRED FRANCESCHI

Seeing is Not Believing

Since I have been working on an old Army truck that I keep in my garage, I decided to make that the theme for this month. It's a WC-24 Dodge ½-Ton Command Car.

First, a bit of history. Many of these were manufactured before World War II, under a "War Contract;" hence, the serial numbers given started with W-nnnnnnn.



Command Cars have a distinctive shape, and some versions were used to transport commanders and high ranking officers, while other versions were loaded with radios and used as reconnaissance vehicles. On the battlefield, primary targets are commanders and communications vehicles. During the battles in Africa, the Germans quickly realized that Command Cars were the first things to take out. The Americans learned almost as quickly that jeeps were safer vehicles to be in. So Command Cars became more popular as utility vehicles.



I put unit markings on my truck for a New Mexico National Guard unit that was at Bataan during the beginning of World War II. Interestingly, the unit was a Coastal Artillery unit, and there's no coast in New Mexico. But the logic is valid. It was an anti-aircraft unit, and airplanes had to cross the coast to attack cities.

[Editor's note: The full text of Fred's article, and many more photos of this vehicle (larger and in higher resolution) can be found in the [Bonus Pages](#). -JW]

have so many contributions on a historical and modeling basis that we wouldn't have room for anything else ourselves though, unless we want to risk our newsletter reaching a critical mass (and it's been pretty close on a number of occasions recently). Having said that though and being brutally honest also, at least the ladies in question look better than we do and we should probably put as few pictures as possible of ourselves in here as a result. We are almost by definition, middle-aged men who may have been in our prime and in great shape thirty years ago. Now? Not so much, perhaps... Many of us could stand to lose a pound or twenty. Having said that, maybe we could leverage what we have—we could do a fireman's style calendar at ASM as a possible fundraiser if anyone is brave enough, although it might not sell very well since most of us have the kind of figure these days that might only prove popular in some Polynesian cultures... Still, we really did used to be cool, right? They can't take that away from us.

Veering off on a slight tangent (again) another thing that I see regularly in newsletters and on modeling websites too are the use of very basic bases, if any at all. A good base really sets a model off and improves the look no end but many people either don't consider it important or don't have the confidence, skills or energy to do it, it seems. I often see some lovely work in other chapter newsletters, on the web and at contests where the model vehicle or aircraft is beautifully done but is slapped on a piece of wood that makes it look like an afterthought. To me at least, these models deserve better. The judges in my experience can't help but be influenced by this, even if they are not supposed to be judging the base itself (and unless it's a diorama or vignette, they aren't). I suspect that they still do it subconsciously, however, so do yourself a favor and consider the total entry—a holistic approach, if you will. Why not stick a figure on there too for scale effect while you're at it? Maybe practice with your entries in our own club competitions until you are happy with the results. Be ambitious! One thing that I really do hate to see though is the use of that awful acid green railroad lichen stuff for trees and bushes, or painted sawdust for grass. Aaaargh! It's horrible, at least in 1/32-scale or above. So please don't use that if you can avoid it. Otherwise, anything else goes. Maybe we should have a clinic on this at some point in the future? Several of our members are good at this kind of thing and it might really help bring everyone else up to speed? It's just a thought anyway.

Following on from that and talking of things that disappoint or annoy people, it's time for me to remind you once again about the State Fair too. (Hopefully you will get this reminder in time, of course, but if not, here's a description of what you

could have done...) Entry days are August 26 and 27 so please ensure that you get your entries in on either date. If you can help with registration or judging which will, I believe, take place on the 29th, then please let Mike Blohm know and he'll add you to his list. All of these are a little early, bearing in mind that the Fair itself runs from September 8 to 18 inclusive, but perhaps they're trying to avoid the traditional New Mexico approach of doing absolutely everything at the last possible moment? Looking at their website, it seems that if you like cows or tepid country music, you're in for a real treat this year. If not, well, there's always a great model competition and themed display (as well as botulism, deep fried, on a stick—everyone knows that everything tastes better on a stick, after all). Our display this year is of course the 25th Anniversary of Operation Desert Storm. You can also get points for entries that will go towards your Modeler of the Year totals. 50 Points for each competition entry and 25 points for each display entry, and entries can actually be in both categories, although you'll only get points for three models with a maximum total available of 150 points. I believe that you can enter 1 model in each of the eighteen categories, however, if you're a ribbon collector and have been busy or ambitious enough, and that would be an interesting challenge. Perhaps we should give a special award and additional points next year to anyone who can manage that? Remember also that if you compete in ASM competitions in either the Intermediate or Masters categories, you will need to ensure that your entries are placed in the Professional category at the State Fair. Also if you have children or know of any that like to build, please encourage them to enter also, as the Junior levels of competition can always do with bolstering and they will be the future of the hobby after all, when we are old(er) and gray(er).

Okay, that's enough cheese and whine from me. Over to the rest of you for some more exciting content...

VICE PRESIDENT'S REPORT

MIKE BLOHM

The ASM-sponsored NM State Fair Model Contest has occurred and results will be available ASAP on the *ASM Website*. We will have a report on how that went at the September 2 meeting. Thanks to all who helped with the registration and judging, and those who contributed models to ASM's "Desert Storm" display. Looking forward to next year, we might consider doing *Star Wars*, as 2017 is the 40th anniversary of the first (and in my opinion the best) movie of the series. We did "Sci Fi" as the ASM display in 2010, and it was a big hit. Also—you might be seeing "Star Wars 40th Anniversary" (May 1977) as a Just Staff-sponsored contest in 2017 as well...

We hope to see a lot of great models at the three sponsored contests at the September 2 meeting—"Cartoons and Caricatures" hosted by Gil De la Plain, "100 Years of British Armor 1916 – 2016" hosted by John Tate, and "Star Trek 50th Anniversary" hosted by Joe Walters and Mike and Matt Blohm. As mentioned in the August Newsletter, William Shatner "might" be a celebrity judge for the Star Trek sponsored contest.

You only have ten months left to build your ultimate entry for Chile Con IV in June 2017.

Here are a couple of items with my ASM Webmaster fez on:

Year 2016 Contest Quick Reference Chart

Titles in **blue** indicate contests for points

- 08 Jan** **SPECIAL CONTEST #1:**
SCI-FI/SCIENCE/REAL SPACE/FANTASY
Sponsored Contest: "Frickin' Laser Beams" (Patrick Dick)
- 05 Feb** **ASM Swap Meet**—no contest.
- 04 Mar** **Open Contest**—Any kit/subject/scale.
- 01 Apr** **Rescue Me!**—Any kit/subject/scale.
- 13 May** **Anniversaries**—Any kit/subject/scale.
- 03 Jun** **SPECIAL CONTEST #2: US PRESIDENTS**
Sponsored Contest: "Northrop Grumman" (Patrick Dick)
- 08 Jul** **Open Contest**—Any kit/subject/scale.
Sponsored Contest: "Revolutionary War / Bicentennial Subjects" (Tony Humphries)
- 05 Aug** **ASM Swap Meet**—no contest.
- 02 Sep** **Captured!**—Any kit/subject/scale.
Sponsored Contest: "100 Years of British Armor" (John Tate)
Sponsored Contest: "Caricatures" (Gil De La Plain)
Sponsored Contest: "Star Trek: 50th Anniversary" (Mike & Matt Blohm & Joe Walters)
- 07 Oct** **Empire of the Sun—Japan**—Any kit/subject/scale from the World Wars
- 04 Nov** **Open Contest**—Any kit/subject/scale.
Sponsored Contest: "Big 'Uns" (Tim Wood)
- 02 Dec** *Model of the Year* competition!

Note: The most complete and up-to-date details on the contests, as well as detailed rules, as always, are on the ASM Website: <http://tinyurl.com/asmsched>

If you have finished a Super Model Challenge Build kit this year, please let me know so that I can make sure we get pics of the model and you (the builder) posted on the website. If you have submitted something for the website (kit review, trip report, article, etc.) and it has not yet been posted, please get with me. There are some model pics posted on the Model Pictures webpage for which I don't know the builder. They are currently listed as "TBD"—please let me know if they are yours. The 2016 Model of the Year Showdown is in December. All contending models are posted on the website.

Upcoming events include the following (links are available on the *ASM Website*):

- Salt Lake City XVI Contest on September 24 in Sandy, Utah
- Modelzona 2016 on November 5 in Mesa, Arizona
- Chile Con 4 on June 16 – 17, 2017

THE FINER POINTS

JERRY LITTLE

It's almost Christmas! Must be, right? I was walking through Walmart the other day and they already have the Christmas

decorations out. Granted there weren't a lot of them, and they were right next to the Halloween decorations, and for a split second, I thought, "Brilliant! Someone is going trick-or-treating as Santa Claus." Of course then I came to the realization that the corporate world was just trying to get started early. And speaking of starting early, it's probably time we start thinking about next year's club model contest. Next year will be interesting in that not only will we have our traditional monthly model club meeting contest, but we'll also be hosting the Region 10 Regional Contest. That gives us a great opportunity to "tune up" our building skills and, maybe, get a kit or two built and judged in preparation for the Regional contest. So next year we are going to have get creative with the Themes and the Sponsored contests. Over the last two years as Contest Director, we've adventured into quite a few unique and creative themes. I don't doubt that next year's themes will be just as good. As a reminder, we have four "open" each year and four themes along with a usual Special contest. Since we are hosting the Regional, I'm going to recommend we forgo the "Special" and just host Chile Con in its place. That is kind of special in its own way!

August was our semi-annual club swap meet and it turned out to be a pretty good event. There were lots of kits available to purchase and for the first time in I can't remember how long, I had kits to sell. Turns out, quite a few guys in our seemingly "airplane" club like cars! Yes, I sold twice as many car kits as I

did aircraft. I should have known the usual suspects... they bought up some really good Tamiya kits and if I thought about it, I could have picked them as the ones to buy! I'm glad they got to pick up some nice models. But it did get me to start thinking about what I wanted for Christmas... you can never start too early on picking that next 1/2-scale kit! Brian, when did you say the MiG-29s are getting here?

The Final Point

The Modeler of the Year points are stacking up. We've only got a handful of contest left to get points. There are really only three contests left for the year. We have this month's "Captured" theme contest, in October we have "Empire of the Sun" theme and finally, the November contest is Open. While the theme contest adds the bonus ten points for being in theme, remember that any model can be judged and earn points. The down side is not being eligible for the Best of Show when not in theme. If you don't get a Best of Show, your kit is not eligible for Model of the Year. So there is an strong motivator for building and entering in theme.



Master

| | |
|----------------------------|-----|
| John Tate | 835 |
| Tony Humphries | 801 |
| Larry Glenn | 745 |
| James Strickland | 574 |
| Frank Randall | 505 |
| Bret Kinman | 485 |
| Brian Peck | 410 |
| Ken Liotta | 373 |
| Victor Maestas | 345 |
| Mike Blohm | 334 |
| Glen Bingham | 202 |
| Keith Liotta | 156 |
| Jerry Little | 150 |
| Dave Miller | 104 |
| Josh Pals | 12 |
| Patrick Dick | 2 |

Intermediate

| | |
|----------------------------|------|
| Chris Kurtze | 1087 |
| David Epstein | 860 |
| Robert Henderson | 810 |
| Len Faulconer | 770 |
| Steve Brodeur | 460 |
| Jack Garriss | 451 |
| Partap Davis | 287 |
| Michael O'Brien | 275 |
| Theron Brawley | 233 |
| Danny Williamson | 225 |
| Don Smith | 212 |
| Wayne Sprong | 210 |
| Ken Piniak | 139 |
| Tim Wood | 127 |
| Mike Clagett | 125 |
| Blaine Couch | 75 |
| Jeff Frickstad | 27 |

| | |
|--------------------------|---|
| Gil Johnson | 4 |
| Michel Wingard | 4 |
| Gorham Smoker | 2 |

Basic

| | |
|---------------------------|-----|
| David Haskins | 785 |
| Jeannie Garriss | 410 |
| Anthony Weaver | 331 |
| Don Goodrich | 300 |
| Rolf Nitsche | 137 |
| Keith McIntyre | 100 |
| Kyle McIntyre | 100 |
| Mark Yoder | 25 |

Junior

| | |
|---------------------------|-----|
| Chris Kurtze, Jr. | 129 |
| Josh Kinman | 127 |

MODELER OF THE YEAR POINTS STANDINGS

As of 22 Aug 16

CONTACT INFO

| | | | |
|----------------------|----------------|----------|---------------------------|
| President: | Tony Humphries | 459-6926 | abkhumphries@gmail.com |
| Vice President: | Mike Blohm | 823-9404 | BlohmM@aol.com |
| Secretary/Treasurer: | Frank Randall | 681-5158 | fcr40.fr@gmail.com |
| Contest Director: | Jerry Little | 280-9038 | bravo52@aol.com |
| Members Pro-Tem: | Jack Garriss | 908-1231 | jgar319113@aol.com |
| | Victor Maestas | 771-0980 | vmaestas@aol.com |
| | Josh Pals | | slapdaddyj@rocketmail.com |
| Webmaster: | Mike Blohm | 823-9404 | BlohmM@aol.com |
| Newsletter Editor: | Joe Walters | 821-3751 | jwalters22@comcast.net |

ASM members are encouraged to submit articles, reviews and other items as appropriate. Contact editor Joe Walters for details and specs. Submission deadline for each issue is the 20th of the preceding month.

BONUS PAGES!

FRED'S FOTO FILE

FRED FRANCESCHI

Seeing is Not Believing

Since I have been working on an old Army truck that I keep in my garage, I decided to make that the theme for this month. It's a WC-24 Dodge ½-Ton Command Car.

When Joe Walters reminded me that it was time to do the September Foto File, I realized that I had to "wake up" and get busy. Since I have been working on an old Army truck that I keep in my garage, I decided to make that the theme for this month. It's a WC-24 Dodge ½-Ton Command Car.

First, a bit of history about the Dodge ½-ton Army trucks. Many of these were manufactured before World War II, under a "War Contract," hence, the serial numbers given started with W-nnnnnnn. Manufacturing continued until the upgraded Dodge ¾-Ton vehicles were built. The ¾-Ton vehicles were lower and were more stable to drive. And more of them could be packed into the hold of a Liberty Ship.

Command Cars have a distinctive shape, and some versions were used to transport commanders and high ranking officers, while other versions were loaded with radios and used as reconnaissance vehicles. On the battlefield, primary targets are commanders and communications vehicles. During the battles in Africa, the Germans quickly realized that Command Cars were the first things to take out. The Americans learned almost as quickly that jeeps were safer vehicles to be in. So Command Cars became more popular as utility vehicles.

By finding the serial number on the left front of the frame, I was able to determine that my vehicle's service number was *probably* W-2052613. That is the number that should be on the hood, painted in a



blue-gray that matches US Navy Intermediate Blue. The number on the hood is 601015. Could that be someone's birthday? Some day I will correct it.

My truck has commercial tires. Ones in combat would have unidirectional (military) tires. Either commercial or unidirectional tires could be on one, depending on its use.

I put unit markings on my truck for a New Mexico National Guard unit that was at Bataan during the beginning of World War II. Interestingly, the unit was a Coastal Artillery unit, and there's no coast in New Mexico. But the logic is valid. It was an antiaircraft unit, and airplanes had to cross the coast to attack cities. So the CA-AA markings are okay. But CA now stands for Civil Affairs units. Did the unit have any WC-24s? I don't know. I checked with the National Guard unit in Santa Fe, but the curator didn't have that information.

My vehicle has the extended frame for an MU-2 winch, but the winch is sitting on the floor of my garage until I rent an engine hoist to lift it into position and attach it to my frame.

What this is leading up to is that anyone building a model based on my truck needs to do a lot of other research.



Above, a view of the rear of the vehicle. Notice that only one tail light has the red brake light/night driving light lens. That was legal at the time and is "grandfathered" and still legal now. Also, the bumper color is a darker olive drab than the body. The darker OD is the correct pre-W II color. And the reflectors are not standard to the era. The tool rack is called a Pioneer Tool Rack, and the axe, shovel, and mattock are pioneer tools.



The correct reflectors for the era. I took these photos at a vendor's table. These are *expensive*.



The correct trailer hitch for the vehicle and era.



Me with the truck a few years ago, before putting on the correct taillights and the bumper markings.







Below: on display at (I think) Double Eagle Airport.





Above: on display at a gun show at the fairgrounds.

Below: When the West-side Calibers opened, they had an exotic car show. I brought the WC-24, and had fun. People could sit in it and get their pictures taken, no Ferrari or Maserati owner would let kids climb over their car.



Is it worth it to drive this old truck. *Absolutely!!!*



BONUS PAGES!

ASM AT THE STATE FAIR

MIKE BLOHM

[Editor's Note: Mike Blohm provided these photos from the Fairgrounds on Registration day, with the following text in email. -JW]

Josh logged 35 entries today, which I think is great for a Friday. Only have five Desert Storm models so far. Byron Gores brought in a huge USS Missouri battleship.













BONUS PAGES!

2016 LAS VEGAS STAR TREK CONVENTION

JOE WALTERS



The annual Creation Star Trek Las Vegas Convention was held August 3 – 7 this year at the Rio Suites, one of the larger convention centers in Las Vegas, perhaps the largest of all next to the Las Vegas Convention Center itself (which, like our convention center, is quite huge and, again as is the case with ours, *no one* wants to go there).

This year marks the fiftieth anniversary of the series, which premiered in September, 1966. For the first time, this convention completely sold out; that's never happened before. They know how many chairs they have in the Main Events room, and they offer that many tickets and no more—everyone gets a seat. Some quick math on my part showed there were approximately 6000 chairs in that room. Creation has long billed this as the largest annual Trek convention in the world, so it's possible this was the largest one *ever*. And it ran for five full days!

There still are no directly modeling-related events at this show, so I'll try not to be too wordy about non-model-related stuff here.

Over 100 guests from every incarnation of Star Trek there's ever been were present (though Karl Urban had to cancel out at the last minute because he was hired to play the Executioner on *Thor Ragnarok*, now filming, so there were no guests from the newer Trek films this time), and many spoke on stage, and many more were available



to meet in the Dealer Room and Autograph Rooms. Every surviving actor from the original series appeared on stage and was available for autographs and photo ops. This being also Joe & Linda's 20th anniversary, we splurged on a photo op that took place on a full-sized replica of the original Enterprise bridge. We stood on either side of the Captain's chair, which was occupied by William Shatner himself. We were in costumes made by Linda, and it makes for a pretty darn nice memento. Sadly, my scanner is on the fritz, so I can't include it here. A convention droid was nice enough to snap the photo at left, so you can see the costumes (I was Scotty). Oddly, moments after this was taken, we stepped through the Guardian portal and found ourselves at last year's convention...

Other events included a concert by the Las Vegas Pops Orchestra, which performed from original sheet music used in recording various soundtracks. Composer Jay Chattaway guest-conducted one piece, his own composition of the “Inner Light” suite from the Next Gen episode of that name. There was an art exhibit, and even “Quark’s Bar,” a convention cafeteria operation (with an open bar in the evening hours) selling standard convention fare, but serving as a real life saver, as there weren’t many opportunities to slip away for a bite without missing something! Many, many attendees came in costumes of various sorts. A few examples are shown here.



Above left: An Andorian lady, with tribble. For some reason, there were a lot of Andorians this year.

Above right: Two of Khan’s people from the TV episode Space Seed. These costumes drew a lot of attention, no doubt due to the expertise evident in their construction.

Left: Lt. Palamas and two Apollos! Or would that be Apolli? I asked, but none of them knew.

[Editor’s note: I believe this page and the next serve as a response to Tony’s request on page one. -JW]



Above left: This costume look a bit uncomfortable. And so does the lady's (rimshot). That's Shana the Drill Thrall.

Above right: Droxine from the TV episode *The Cloud Minders*. At the costume competition, she showed how the cape spreads to become a pair of gossamer wings.

Left: This guys is *tall*. Taller than me. Maybe even taller than Brian Peck... I was holding the camera high over my head. And, man, did he look the part!

Right: This was Whoopi Goldberg's first Star Trek convention ever! And she was excellent (she's the one in gray). She had this picture taken because she had bet some friends that no one would show up dressed in costume as her Guinan character, and she wanted proof that she was wrong.

Below: This was also Kirstie Alley's first convention! She looked fantastic, and seemed to have a real fun time answering questions and meeting fans.



Bottom: A Next Generation panel, featuring LeVar Burton (LaForge), Marina Sirtis (Troi), Brent Spiner (Data), and Jonathan Frakes (Riker). Frakes is not shown here, because he spent most of the panel wandering around the audience raising havoc and mayhem. Put any two of these folks together in a panel, and madness will ensue.





Left: William Shatner, like the Energizer Bunny, just keeps going and going. He's always a big draw, and his audience always has a good time.

Below: Three Klingon actors in costume as their characters. Left to right is one of the infamous Duras sisters (I never was clear on which one), General Martok, and Chancellor Gowron. Upon seeing this desk and couch setup, they immediately decided they should put on an impromptu Klingon talk show, and kept the crowd laughing throughout.



Actual model-related news! In our last issue, mention was made of new Trek models coming from Moebius Models, with subjects from the newest three movies. A poor quality photo was included with that report. Well, Moebius had a table in the Dealer Room here, sort of; it was basically just a table with these four signs on it. At times, there was a man sitting at the table, with a lit-up new *Enterprise* model before him, but that always drew a crowd and I never was able to approach close enough to find out what the story was. Anyway, here are some better images, taken by me, of the forthcoming models' promo materials.

Notice that at least in the case of the *Enterprise* model, the rumored availability of a separate lighting kit is confirmed right there on the sign (there's no indication of lighting kits for the other three models, but that's what third parties are for!). And, not to spoil anything, but there's no indication as to whether decals are included to portray the ship in its, ah, *slightly* different appearance as seen at the end of *Star Trek Beyond*.

On the next page, two ships from the 2009 movie. Looks like they're still simply calling the jellyfish-shaped vessel "Jellyfish." It was never actually named on screen; apparently a Vulcan design, even Spock only referred to it as "our fastest ship."

USS Enterprise
AS SEEN IN STAR TREK BEYOND

- ULTRA-DETAILED MODEL KIT BASED ON CGI FILES FROM THE FILM
- PRECISION ENGINEERED TOOLING ENSURES THE ULTIMATE IN CRISP, PRECISE DETAIL
- SUPERIOR PART FIT
- INCLUDES DETAILED ASSEMBLY INSTRUCTIONS AND MARKING DECALS
- OPTIONAL LIGHTING KIT SOLD SEPARATELY

STAR TREK

MOEBIUS MODELS

NEW MODEL KITS BY **MOEBIUS**

TM & © 2016 CBS Studios Inc. © 2016 Paramount Pictures Corporation. STAR TREK and all related marks and logos are marks of CBS Studios Inc. All rights reserved. Product shown subject to change. All details subject to license approval. Paint and cement required for assembly - not included.



- ULTRA-DETAILED MODEL KIT BASED ON CGI FILES FROM THE FILM
- PRECISION ENGINEERED TOOLING ENSURES THE ULTIMATE IN CRISP, PRECISE DETAIL
- SUPERIOR PART FIT
- DETAILED COCKPIT WITH AMBASSADOR SPOCK FIGURE
- INCLUDES DETAILED ASSEMBLY INSTRUCTIONS

Jellyfish

AS SEEN IN STAR TREK

STAR TREK



NEW MODEL KITS BY MOEBIUS



- ULTRA-DETAILED MODEL KIT BASED ON CGI FILES FROM THE FILM
- PRECISION ENGINEERED TOOLING ENSURES THE ULTIMATE IN CRISP, PRECISE DETAIL
- SUPERIOR PART FIT
- INCLUDES DETAILED ASSEMBLY INSTRUCTIONS AND MARKING DECALS

USS Kelvin

AS SEEN IN STAR TREK

STAR TREK



NEW MODEL KITS BY MOEBIUS

©2002 Starline Inc. ©2002 Prometheus Products Corporation. STAR TREK and all related marks and logos are marks of CBS Studios Inc. All rights reserved. Product shown subject to change. All marks subject to owners' approval. Design and assembly required to complete. NOT INCLUDE

USS Franklin™
AS SEEN IN STAR TREK BEYOND

- ULTRA-DETAILED MODEL KIT BASED ON CGI FILES FROM THE FILM
- PRECISION ENGINEERED TOOLING ENSURES THE ULTIMATE IN CRISP, PRECISE DETAIL
- SUPERIOR PART FIT
- INCLUDES DETAILED ASSEMBLY INSTRUCTIONS AND MARKING DECALS



STAR TREK™

MOEBIUS MODELS

NEW MODEL KITS BY **MOEBIUS**

TM CBS Studios Inc. © 2010 Paramount Pictures Corporation. STAR TREK and all related marks and logos are marks of CBS Studios Inc. All rights reserved. Product lineup subject to change. All details subject to licensor approval. Paint and cement required for assembly - not included.

Above, this one is specifically from the current *Star Trek Beyond*. A useless bit of trivia: director Justin Lin named this ship for his father, Frank Lin. Really!

Here are a couple of general shots of the vast Dealer Room, wherein one could find a staggering array of ways to spend money on science-fiction related *stuff*. Prominent in the top picture, in the background at left, is the enormous M•A•C booth (that's how they spelled it). They're a cosmetics outfit, a major sponsor of this convention, and their cylindrical display took up a *lot* of space. They were continually carrying out makeup demos at multiple stations, converting attendees into Klingons, Borg, Data-like androids, Orions, and much more. I presume they were selling do-it-yourself kits and such. Notice that the "roof" of their display is a huge model of the original *Enterprise* saucer section, replete with bridge, windows, and blinky red and green lights.

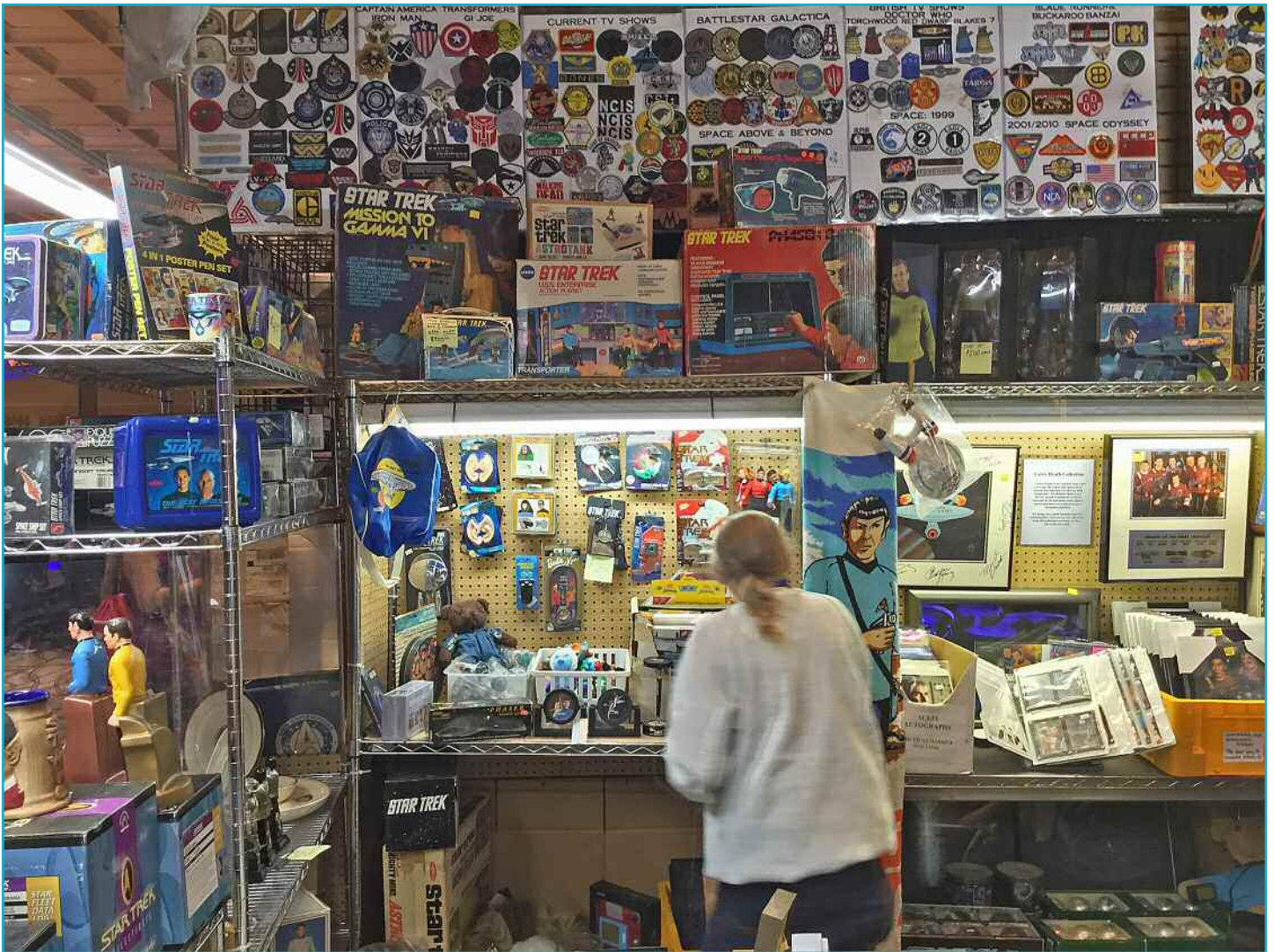


At left in the same photo is the Roddenberry booth, operated by Gene Roddenberry's son Rod, who sells a lot of Trek-related items. Below, you can see a wide array of merchandise, from collectable plates to swords and similar weapons to t-shirts and more. There was even a booth selling Star Trek-related automotive products, something I'd never seen before. Seat covers, floor mats, steering wheel covers, and much much more.





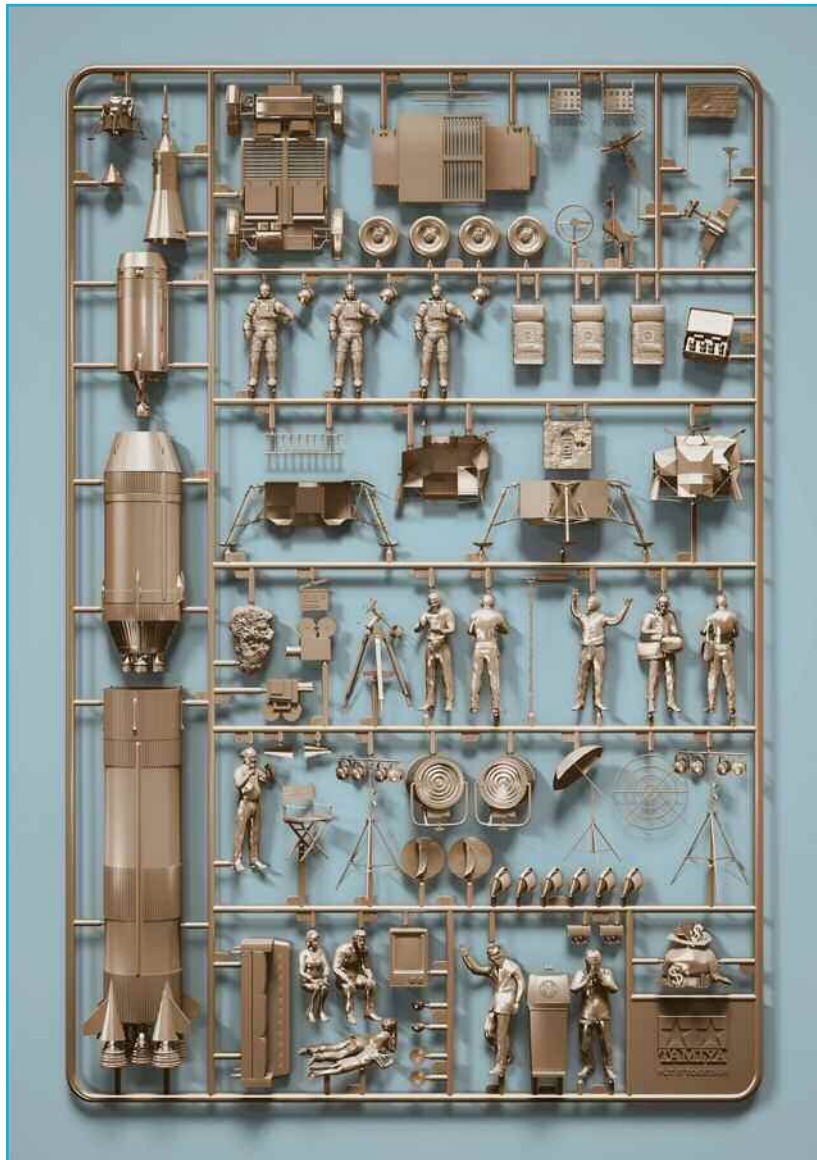




Above, this one's not so model-related, but it caught my eye by the sheer eclectic nature of this incredible combination of various types of toys, games, insignia, accessories, and other merchandise. And this is only a small part of this booth!

Next year, the convention is again planned for five days, starting on Tuesday, August 2, 2017. Tickets are sold by tier, with the biggest-ticket "Gold" memberships opening first. Tickets go fast, particularly the good-seat tickets in the Reserved Seat packages. Something to keep in mind! We always plan to stay a few more days in Las Vegas after the convention for some needed R&R. Rumor has it that it is possible to find things to do in that city when the convention isn't going on.

BONUS PAGES! MISCELLANEOUS



At left, one of five art pieces generated for a Tamiya print ad campaign featuring fictional kits for constructing your very own favorite conspiracy theory! With this one, you can build your own Fake Moon Landing diorama. Another one allows you to build the Kennedy Assassination; there's even a plastic Grassy Knoll on the sprue! The deaths of Marilyn Monroe and Elvis are also represented, as is the Roswell UFO Incident. Ah, those wacky Japanese marketing droids. To see all five ad pieces (no, they aren't real kits!), visit the web (<http://tinyurl.com/asm1609a>).

Below: looks like another flight line job lost.



Join IPMS/USA!

The International Plastic Modelers' Society is an organization dedicated to the fun of Scale Modeling. Started by Jim Sage of Dallas, Texas, in 1964, there are now IPMS branches all over the world.

As part of your IPMS/USA membership, you will receive the IPMS Journal six times a year. In it you will find stories of interest on subjects such as aircraft, armor, automotive, ships, and figures. You will also find listings of IPMS contests and swap meets, hints and tips, and reviews. Membership also qualifies you to participate in IPMS/USA-sanctioned Regional Contests, as well as our world-famous National Convention, held each summer.

As a member, you'll also be able to access our online Members' Forum, where a wide variety of society and modeling topics are discussed. In addition, many hobby shops around the country offer discounts to IPMS/USA members. To join IPMS/USA, simply use the form below or join online (<http://www.ipmsusa.org>).

For any questions or problems regarding your membership application or renewal, please contact the IPMS/USA Office Manager (manager@ipmsusa.org).



IPMS/USA MEMBERSHIP FORM

IPMS No.: _____ Name: _____

Address: _____ If Renewing _____ First _____ Middle _____ Last _____

City: _____ State: _____ Zip: _____

Phone: _____ E-mail: _____

Signature (required by P.O.) _____

Type of Membership Adult, 1 Year: \$30 Adult, 2 Years: \$58 Adult, 3 Years: \$86

Junior (Under 18 Years) \$17 Family, 1 Year: \$35 (Adult + \$5, One Set Journals) How Many Cards? _____

Canada & Mexico: \$35 Other / Foreign: \$38 (Surface) Checks must be drawn on a US bank or international money order

Payment Method: Check Money Order

Chapter Affiliation, (if any): _____

If Recommended by an IPMS Member, Please List His / Her Name and Member Number:

Name: _____ IPMS No.: _____

IPMS/USA

Join or Renew Online at: www.ipmsusa.org

PO Box 56023

St. Petersburg, FL 33732-6023